

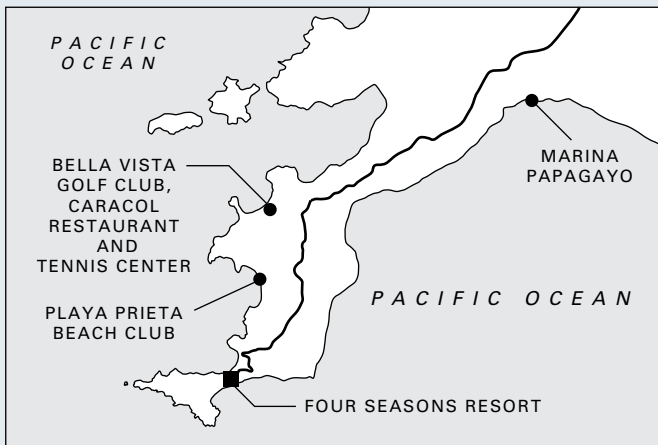
# ACCOMMODATIONS

*Guest Rooms, Suites & Residences*

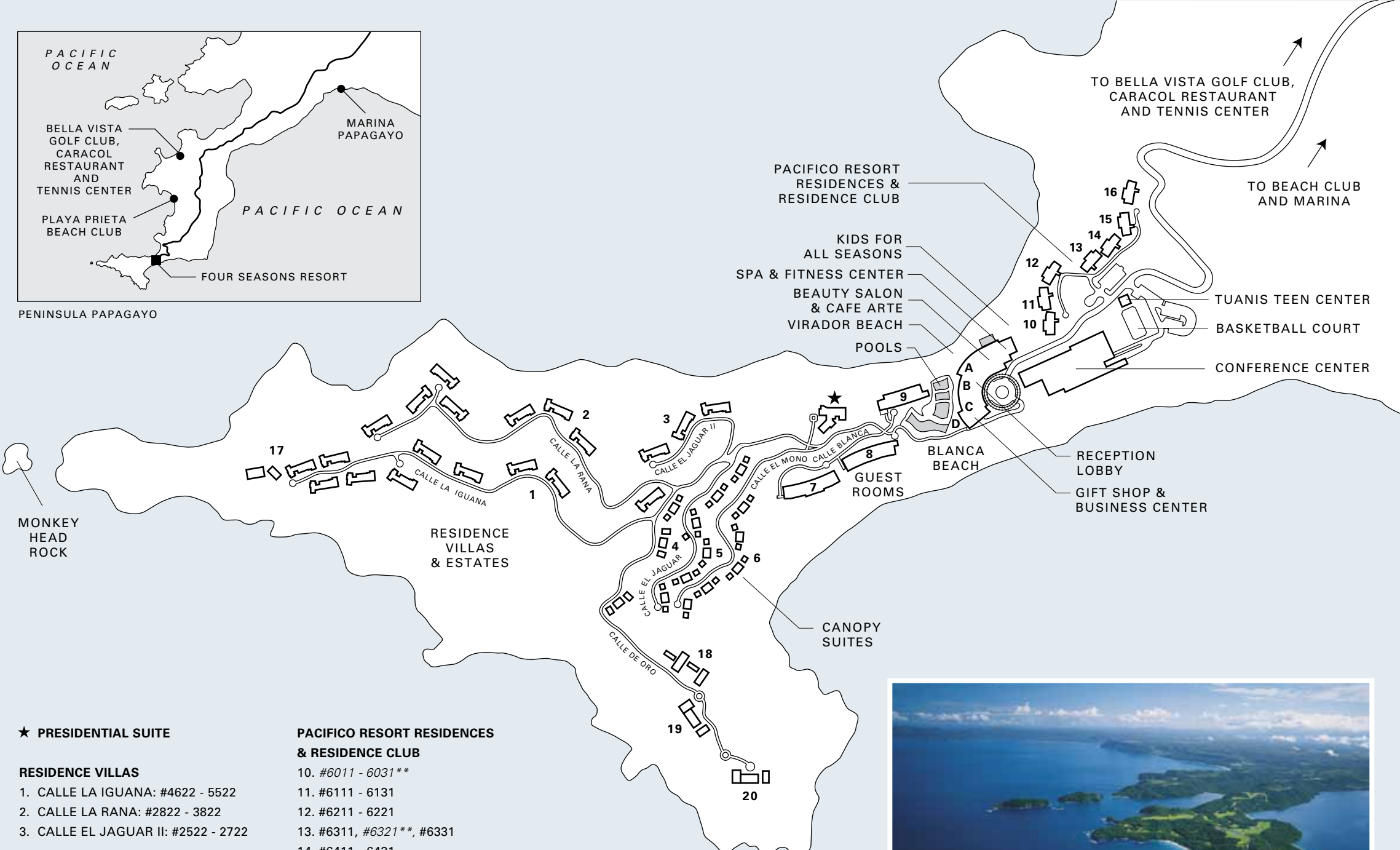


**FOUR SEASONS RESORT**

*Costa Rica at Peninsula Papagayo*



PENINSULA PAPAGAYO



★ **PRESIDENTIAL SUITE**

**RESIDENCE VILLAS**

- 1. CALLE LA IGUANA: #4622 - 5522
- 2. CALLE LA RANA: #2822 - 3822
- 3. CALLE EL JAGUAR II: #2522 - 2722

**CANOPY SUITES**

- 4. CALLE DE ORO: #1711 - 1922
- 5. CALLE EL JAGUAR: #1011 - 1621
- 6. CALLE EL MONO: #511 - 921

**GUEST ROOMS**

- 7. PLAYA BLANCA 2: #4101 - 4411
- 8. PLAYA BLANCA 1: #3101 - 3410
- 9. PLAYA VIRADOR: #2101 - 2409

**PACIFICO RESORT RESIDENCES & RESIDENCE CLUB**

- 10. #6011 - 6031\*\*
- 11. #6111 - 6131
- 12. #6211 - 6221
- 13. #6311, #6321\*\*, #6331
- 14. #6411 - 6431
- 15. #6511 - 6531\*\*
- 16. #6611 - 6631

\*\* Residence Club Units

**RESIDENCE ESTATES**

- 17. CASA DE LA LUNA: #5601
- 18. CASA DEL MAR: #5701
- 19. CASA DEL SOL: #5801
- 20. CASA DEL CELAJE: #5901

**RESTAURANTS**

- A. DI MARE
- B. TICO'S BAR
- C. PAPAGAYO
- D. CONGO'S



## SUITES

### PRESIDENTIAL SUITE

The stunning Presidential Suite, located on the hillside of the peninsula, offers sweeping views over the Pacific Ocean, bay and Resort. It features an elegant dining room and pantry. A spacious adjoining living room leads onto an expansive private outdoor living area with panoramic ocean views, suitable for outdoor dining, and a large infinity-edge pool and garden. The master suite offers a private living area and bathroom, and has views through the private gardens and natural landscape to the Pacific Ocean. The Presidential Suite is a gracious three-bedroom residence, ideal for couples, families or executives wanting privacy.

### CANOPY PREMIER THREE-BEDROOM SUITE WITH PLUNGE POOL

These suites include a separate dining area, which opens onto a private terrace that overlooks the infinity-edge plunge pool and is furnished with inviting chaises longues. The three bedrooms flank the living area, which is accessed by walkways with sweeping views of the Pacific. These suites are ideal for couples or families with older children and a nanny.

### CANOPY ONE-BEDROOM SUITE & CANOPY ONE-BEDROOM SUITE WITH PLUNGE POOL

These stilted luxury tree houses are built within the lush canopy on a dramatic hillside looking down at the Pacific. The Canopy One-Bedroom Suite features a furnished, landscaped patio with an outdoor dining area and partial views of the bay. With the addition of a neighbouring suite, they are perfect for families with older children or friends vacationing together. (95 m<sup>2</sup> / 1,025 sq. ft.)

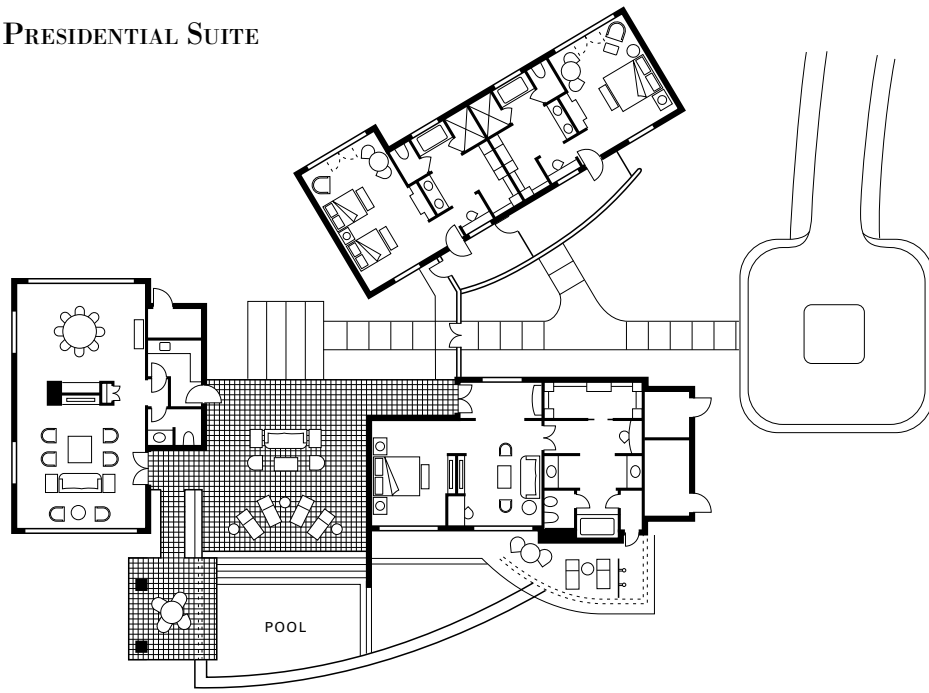
In addition, the Resort features six identical One-Bedroom Suites with plunge pools. Each has its own second powder room with full shower. Set in the uppermost tree level, these too offer views of the surrounding tropical dry forest or the bay and include a furnished, landscaped patio with an infinity-edge plunge pool (6.5 x 6.5 ft.). They are ideal for couples on a special anniversary or honeymoon. (112 m<sup>2</sup> / 1,200 sq. ft.)

*Note: The Canopy Suites are not recommended for families travelling with small children.*



6

## PRESIDENTIAL SUITE



- This suite is a golf-cart ride or a five-minute walk from the Resort's pools, beaches, restaurants and other facilities.
- The suite offers an extra-large living room with a separate dining room that seats eight, an adjacent pantry area with a microwave and refrigerator, a luxurious master bedroom and a panoramic open-air central courtyard that leads to a large private swimming pool and a private outdoor shower.
- The master bedroom features a proper dressing area.
- Separate bungalows house the second and third bedroom with interior connecting rooms.
- Sleeps three couples; eight adults; or six adults and two children. (390 m<sup>2</sup> / 4,200 sq. ft.)

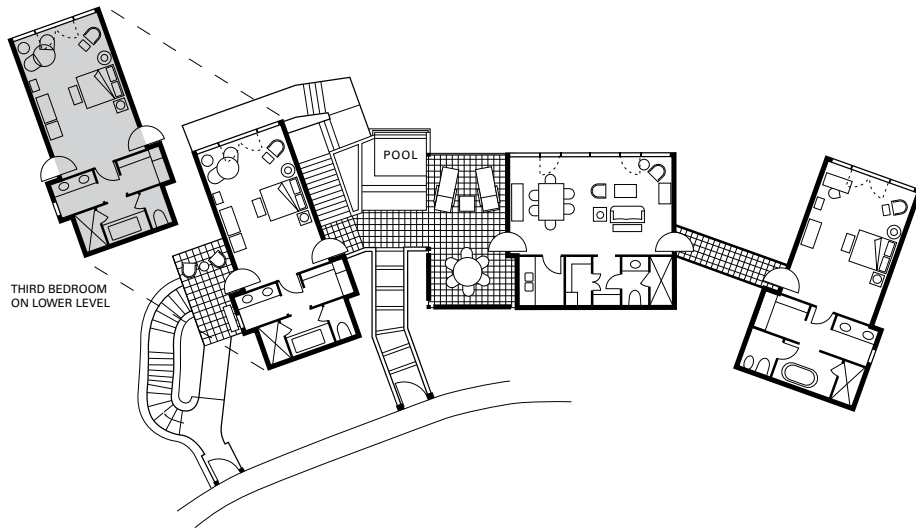


FOUR SEASONS RESORT  
*Costa Rica at Peninsula Papagayo*



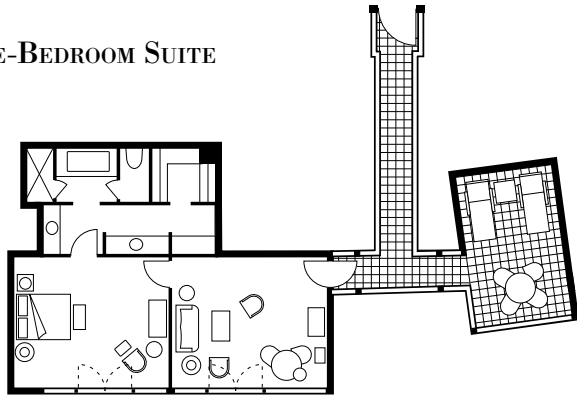
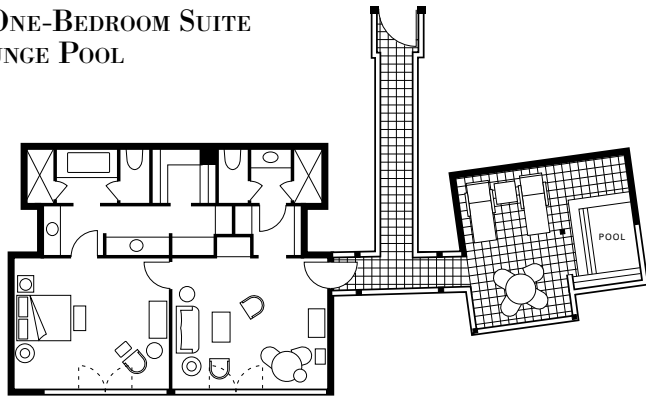


## CANOPY PREMIER THREE-BEDROOM SUITE WITH PLUNGE POOL



- This suite is a golf-cart ride or an eight-minute walk from the Resort's pools, beaches, restaurants and other facilities. A private entry walkway through lush native gardens leads to the residence's front door.
- Third bedroom offers its own private ocean-view terrace, walkway and entrance.
- Suite features a separate dining area for casual meals and entertaining, with the added convenience of a pantry with a microwave, coffee maker and sink.
- Three marble bathrooms include a deep soaking tub, separate glass-enclosed shower, large double vanity, and WC in a separate room. For convenience, a guest powder room with shower is located off the living room.
- Sleeps six adults, or six adults and two children. (230 m<sup>2</sup> / 2,480 sq. ft.)



**CANOPY ONE-BEDROOM SUITE  
WITH PLUNGE POOL**

- Each suite features a king-bedded master bedroom and a queen sofa bed. The marble bathroom includes a deep soaking tub, separate glass-enclosed shower, large double vanity, and WC in a separate room. A guest powder room with shower is located off the living area in the Canopy One-Bedroom Suites with Plunge Pools.
- The Canopy One-Bedroom Suites are the perfect upgrade from a Premium Room for those looking for a luxury tree house experience.
- These suites are a golf-cart ride or an eight-minute walk from the Resort's pools, beaches, restaurants and other facilities.
- Both suites sleep three adults, or two adults and two children.





**FOUR SEASONS RESORT**  
*Costa Rica at Peninsula Papagayo*



## PRIVATE RESIDENCES

### **CASA DE LA LUNA – RESIDENCE ESTATE**

One of the most exclusive residences on the peninsula, this custom home offers the ultimate in privacy located in its own gated community. The sleek main living area includes an entry atrium, panoramic living room, kitchen, media room and private sitting room. Special features include rich hardwood flooring, vaulted ceilings, Viking appliances, zoned air conditioning, outdoor showers and integrated technology. Another major feature is its amazing 180-degree sunset views overlooking the Pacific Ocean.

### **TWO- AND THREE-BEDROOM RESIDENCE VILLAS WITH PLUNGE POOLS**

Set above the dry tropical forest, the Residence Villas offer peace, privacy, beauty and views of the Pacific Ocean. A private entry walkway through lush native gardens leads to the front door of these residence villas. Infinity-edge plunge pools overlook the ocean. Outdoor dining patios and decks are the perfect location to relax or enjoy an evening under the stars.

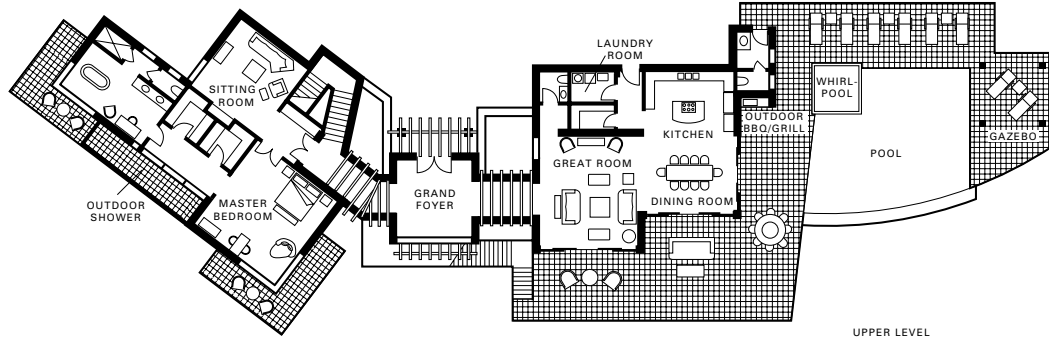
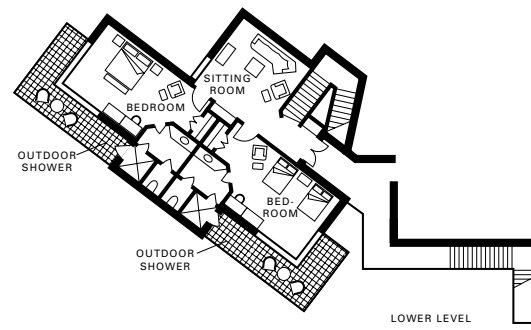
### **PACIFICO TWO- AND THREE-BEDROOM RESORT RESIDENCES**

Pacifico Two- and Three-Bedroom Resort Residences are located on the ocean side of the peninsula. Nestled into the hillside, they offer spacious indoor condominium-style living. The dining area leading onto a screened terrace is ideal for entertaining. The residences are also perfect for families, friends vacationing together – or any longer-stay guests who prefer the comforts of residential-style living.

*Note: Two- and Three-Bedroom Residence Villas with Plunge Pools are not recommended for families travelling with small children.*



## RESIDENCE ESTATE CASA DE LA LUNA



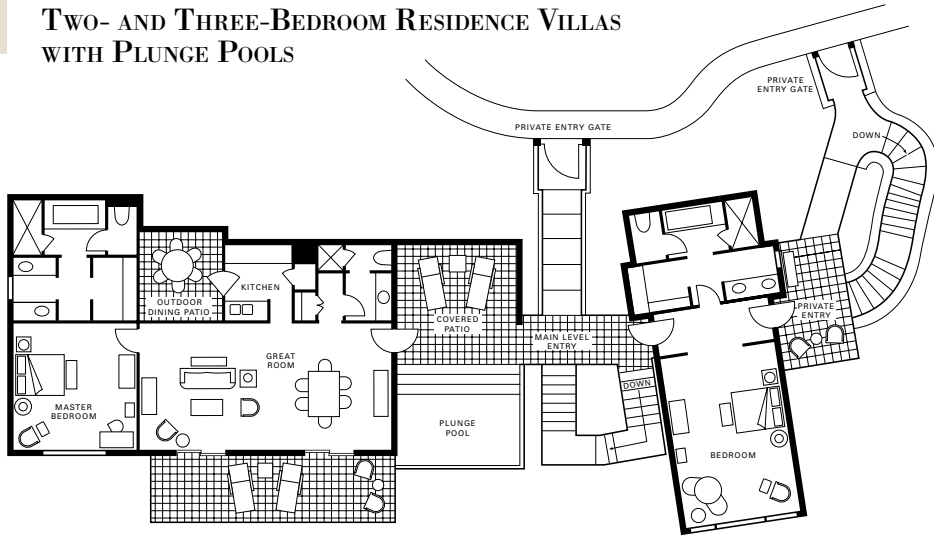
- The most exclusive estate home on Peninsula Papagayo is over 492 m<sup>2</sup> (5,300 sq. ft.) of indoor living space and 372 m<sup>2</sup> (4,000 sq. ft.) of outdoor patios and decks.
- Elevated infinity-edge pool is nestled in the hill with multiple relaxation and sunning areas, 180-degree sunset views along with whirlpool and a large covered pavilion with barbecue overlooking the Pacific Ocean.
- Easy golf cart ride or a 10- to 12-minute walk from the Resort's lobby, pools, beaches, restaurants and other facilities.
- Full open-air kitchen features granite countertops and Viking stainless steel appliances.
- Contemporary in feel, the master bedroom has vaulted ceilings and a cathedral style bath tub with views of Santa Rosa National Park and the Pacific Ocean.
- The sleek lines continue on the second floor, showcasing rooms with two double and two king beds, both having outdoor showers and ocean views.
- Sleeps eight adults, or six adults and six children.







## TWO- AND THREE-BEDROOM RESIDENCE VILLAS WITH PLUNGE POOLS

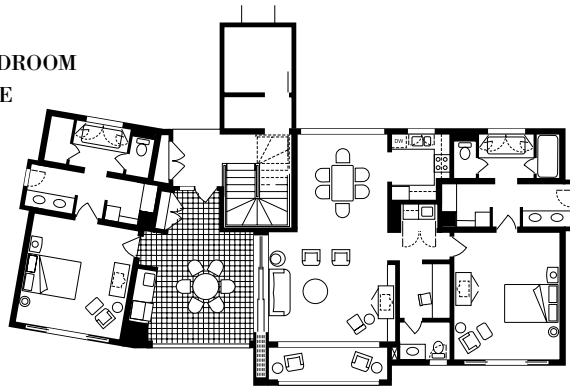


- The Residence Villas are a five-minute golf cart ride or an 8- to 10-minute walk from the Resort's pools, beaches, restaurants and other facilities.
- These air-conditioned residence villas are the ultimate in luxury treehouse living and have spectacular views of the Pacific Ocean. With wireless Internet, they also feature 102 m<sup>2</sup> (1,100 sq. ft.) of outdoor living space with two outdoor dining options: an intimate dining courtyard seating four and terrace dining for two. The main dining room seats six.
- Many of these units have outdoor showers connected to the bedrooms. The master bedroom is connected to the living room space, and all second and third bedrooms have their own private entry.
- The well-equipped kitchen features Guatemalan almendro wood cabinets and stainless steel appliances.
- Two-bedroom sleeps six adults, or four adults and two children. (200 m<sup>2</sup> / 2,150 sq. ft.)
- Three-bedroom sleeps eight adults, or six adults and three children. The third bedroom is on the lower level with private entry. (255 m<sup>2</sup> / 2,750 sq. ft.)

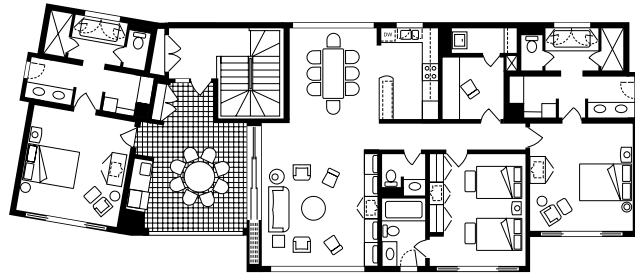




### PACIFICO TWO-BEDROOM RESORT RESIDENCE



### PACIFICO THREE-BEDROOM RESORT RESIDENCE



- The Pacifico Resort Residences are the closest accommodations to the Kids For All Seasons Kids' Club and Tuanis Teen Centre as well as a golf cart ride or a five-minute walk from the main lobby, spa, pools, beaches, restaurants and other facilities.
- These residences feature two and three spacious bedrooms, a full kitchen, large living area, separate dining area that seats eight; full-sized office and an enclosed laundry room.
- The Two-Bedroom Resort Residence sleeps six adults, or four adults and two children. (179 m<sup>2</sup> / 1,925 sq. ft.)
- The Three-Bedroom Resort Residence sleeps eight adults, or six adults and three children. (203 m<sup>2</sup> / 2,185 sq. ft.)
- Outdoor connecting eating area with own grill seats eight.





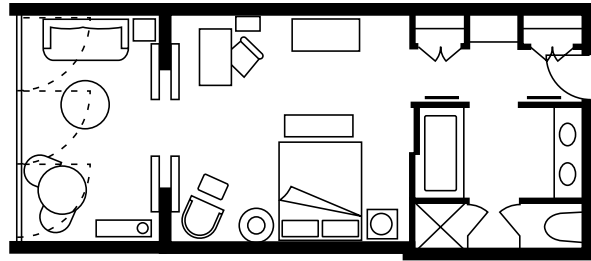
**FOUR SEASONS RESORT**  
*Costa Rica at Peninsula Papagayo*



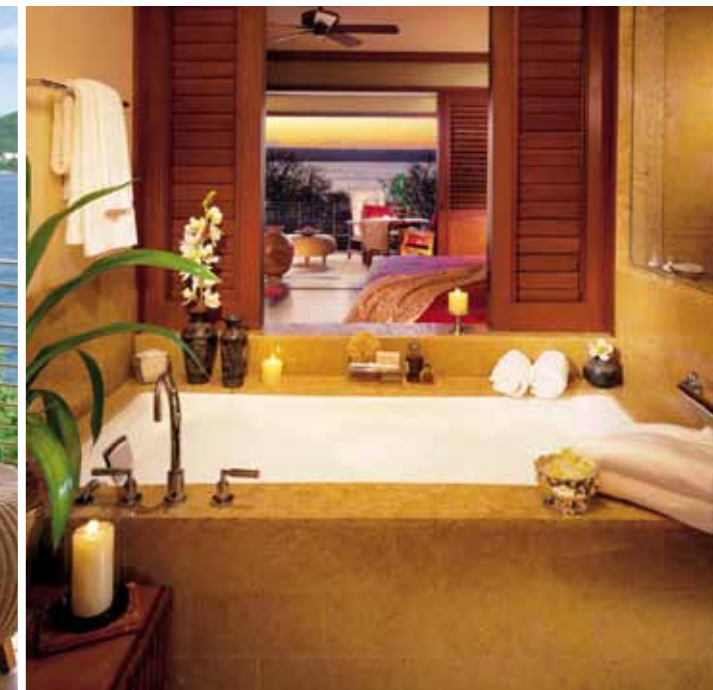
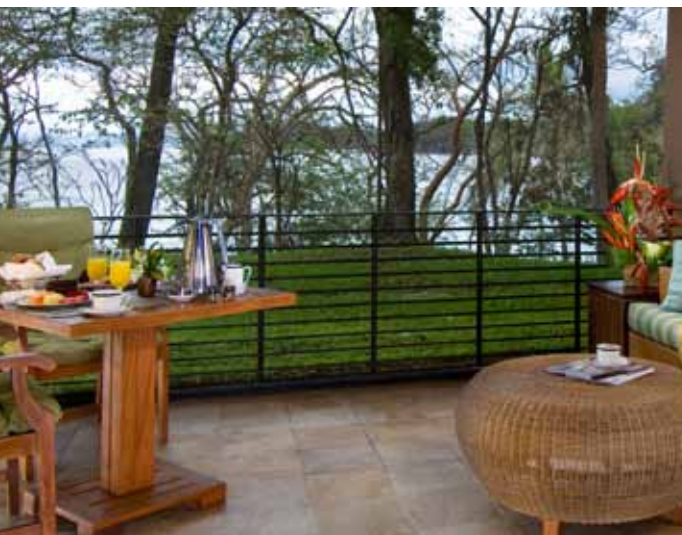
## **GUEST ROOMS: PREMIUM, DELUXE AND GARDEN**

The 120 guest rooms, located in three four-storey buildings, are steps to the swimming pools and beaches of the Resort. The rooms are divided into three categories: Premium, located on the third and fourth floors; Deluxe, on the second floor; and Garden, on the first floor. All rooms are 56 m<sup>2</sup> (600 sq. ft.) and seamlessly blend indoor comfort with an outdoor balcony which includes a seating area overlooking the native tropical landscape, and all offer partial views of the bay or ocean.

Sliding louvred doors between sleeping and living spaces maximise privacy and invite the flow of fresh sea breezes. Natural woods and earth tones create a warm and soothing environment for guests to relax.



- Guest rooms are centrally located and only a two- to three-minute walk to lobby, spa, pools, beaches and restaurants.
- Many feature connecting rooms perfect for families travelling together.
- The airy outdoor living areas merge into spacious furnished balconies, protected by a screen.
- Maximum occupancy allows three adults, or two adults and one child in rooms with king beds; and four adults, or two adults and two children in rooms with two double beds. Extra beds are available upon request.
- The marble bathroom includes a deep soaking tub with a partial view of the canopy, separate glass-enclosed shower, double vanity, and WC in a separate room with telephone.





**FOUR SEASONS RESORT**  
*Costa Rica at Peninsula Papagayo*

Peninsula Papagayo, Guanacaste, Costa Rica  
Tel. (506) 2696-0000 Fax (506) 2696-0500

For reservations, call your travel consultant, contact Four Seasons at 1(800)332-3442 in the U.S. or the Resort directly at (011)506-2 696 0198. Or send an email to [reservations.cos@fourseasons.com](mailto:reservations.cos@fourseasons.com)

[www.fourseasons.com/costarica](http://www.fourseasons.com/costarica)